

# Gardyn®

## HOME KIT 4.0



### Grow Guide

# Welcome to the Gardyn family!

## Get ready to discover the joy of growing your own food.

From seed to harvest and beyond, we've got you covered with comprehensive resources, essential accessories, and, of course, Kelby. We are thrilled you're here and can't wait to see your progress!

## Inside this guide you'll find tips on:

Gardyn Home Kit 4.0 setup	4
The Gardyn essentials to help you grow with peace of mind	26
Your Gardyn's care cycle	28

## Let's get Gardyning!

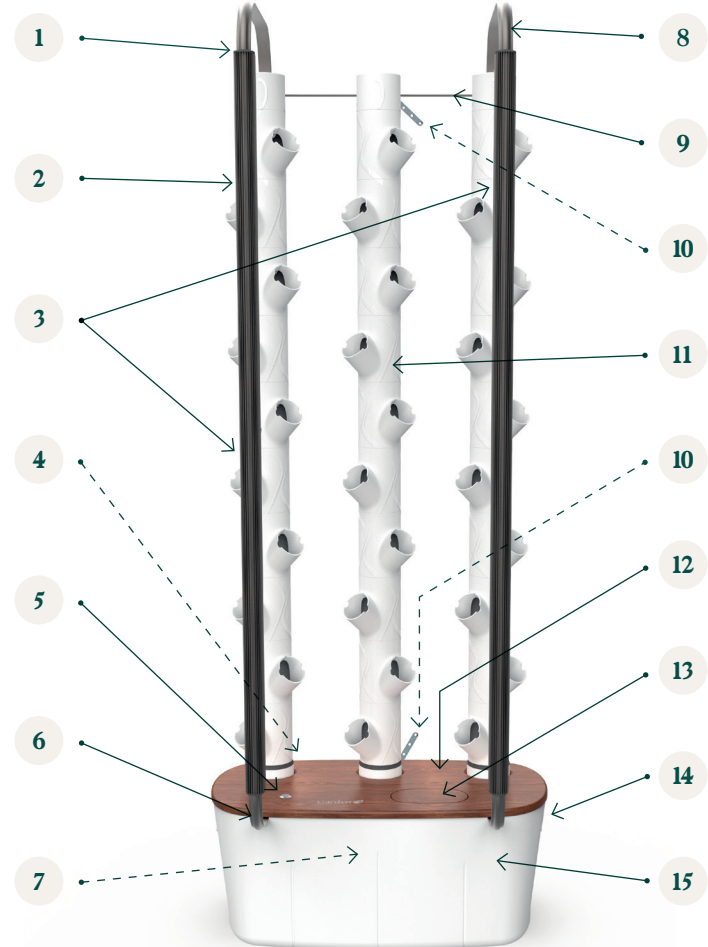




Watch Video

# Meet Your Gardyn Home

- 1 Light protective caps
- 2 LED light bars
- 3 Cameras
- 4 Main switch
- 5 Light switch
- 6 Lower blades
- 7 Water pump
- 8 Upper blades
- 9 Metal rod
- 10 Safety strap
- 11 Columns
- 12 Lid
- 13 Wood cap to watering compartment
- 14 Lid locks
- 15 Water tank



**Reminder:** Do not plug the device in until instructed to do so.



STEP 1

# Unpack cautiously

Watch Video

Carefully unpack the parts following the order in the video.



2 LED light bars



Lid with wood cap



Metal plate, plugs and spoon



3 columns



2 upper blades and rod



Water tank



Power supply



30 yPods

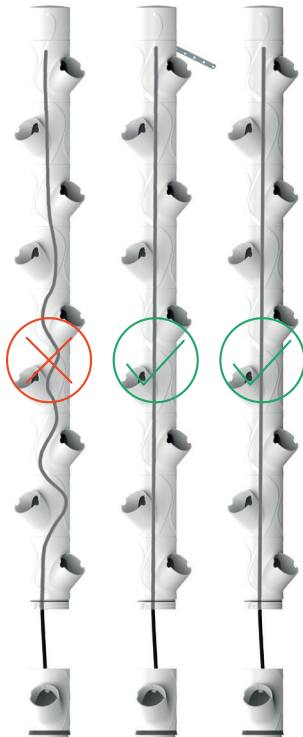


STEP 2

# Assemble the columns

Watch Video

- 1 **Gently pull on the end** of the irrigation hoses to ensure they are straight inside the columns and avoid any kinks.



- 2 **Align the arrows, then twist.**  
When completed, the arrows will no longer align.



- 3 **Identify the center column** with the safety strap.





STEP 3

# Mount and lock the lid

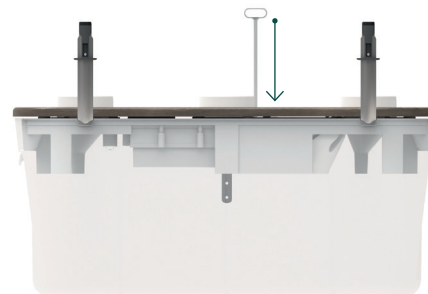
Watch Video

- 1 **Open the lid locks** to mount and lock the lid onto the water tank.

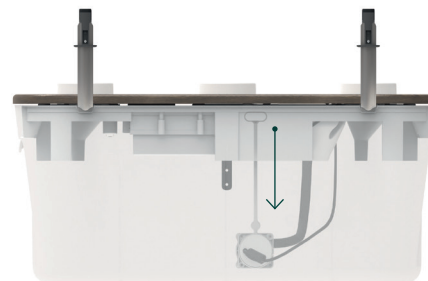


- 2 **Remove the cardboard** and lower the water pump.

*The cardboard's appearance may vary slightly from the one shown.*



Pump in upper position



Pump in lower position



STEP 4

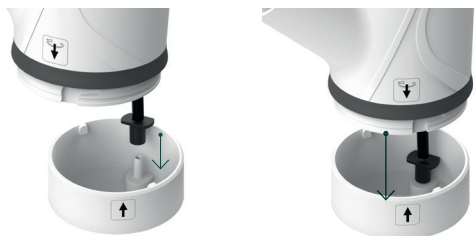
## Connect the columns

Watch Video

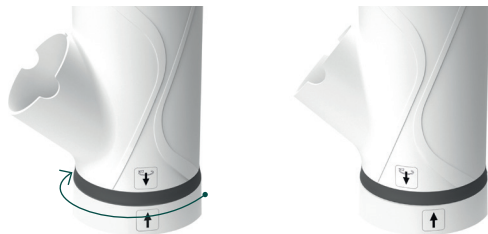
- 1 **Start with the middle column** identified by the safety strap in the back.



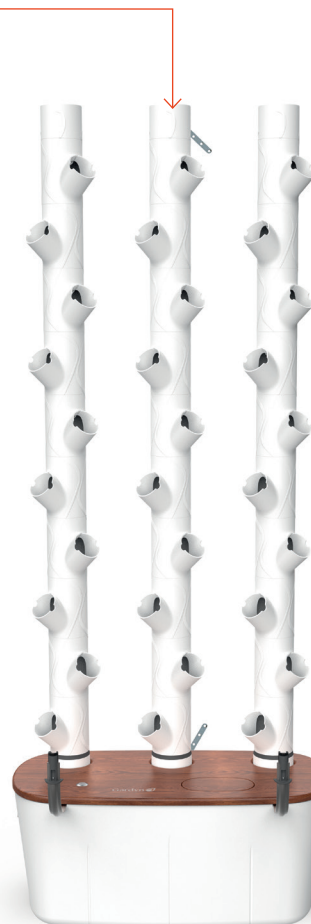
- 2 **Hold the column vertically** and plug the hose connector onto the tube inside the column's base until snug.



- 3 **Twist the column** to secure. When completed, the arrows will no longer align.



- 4 **Ensure all open slots face the front of the lid**, as shown.





STEP 5

# Attach the LED light bars

Watch Video

**1** Carefully open and unpack the box containing the 2 LED light bars.

**2** Identify your LED light bars:

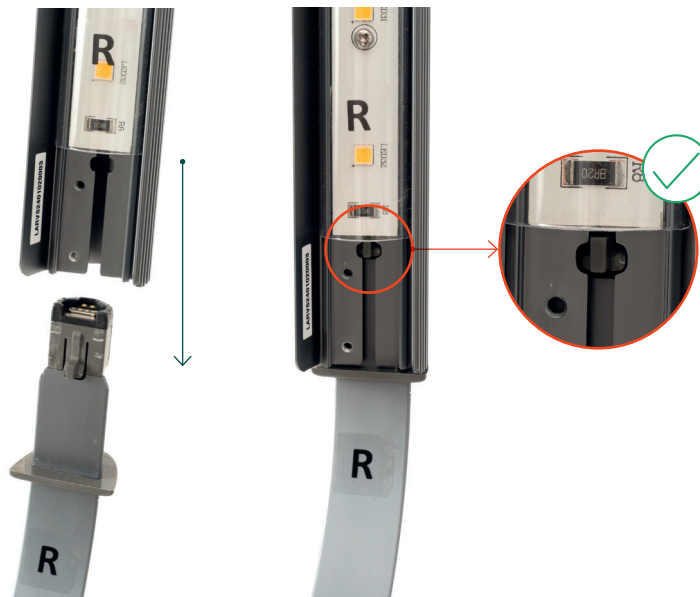
**Left bar** (camera in the middle)

**Right bar** (camera on top)



**3** Starting with either side, hold the bar vertically to carefully yet firmly slide the bottom of the light onto the lower blades attached to the lid.

**Press until you see the grey post in the notch of the light bar.**







STEP 6

## Mount upper blades

Watch Video

- 1 **Insert the metal rod** on the back of the columns.



- 2 **Slide the metal plate** into the center column and insert the plug to secure.



- 3 **Insert upper blades** and slide light protective caps until flush with light bars.



- 4 **Insert plugs to secure.**  
*Your kit comes with an extra plug should you ever need it.*



# Check progress

## At this stage, you should see the following:

- **The 3 columns** have all slots facing the lights and all vine designs aligned.
- **The safety straps** are aligned on the center column and the lid.
- **The two LED light bars** are mounted vertically, and the lower blade with the L sticker is on the left while the lower blade with the R sticker is on the right.
- **The metal bar and upper blades** are secured by the metal plate and 3 plugs in the back of the columns.
- **The protective caps** on the upper blades are flush with the top of each light bar.
- **The water pump** is lowered into the tank and the transportation plug is removed.
- **The lid locks** are pushed against the sides of the water tank in the locked position.



If you've completed each of these steps, you're ready to secure your device to the wall using the safety straps on the center column and back of the lid.



STEP 7

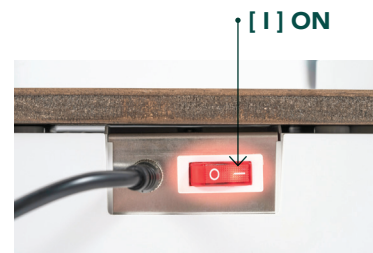
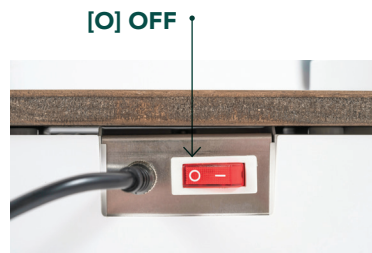
## Fill tank and turn on

Watch Video



• **Fill the tank** with 3 gallons of tap water. Later, the app will let you know when and how much water to add.

**DO NOT ADD PLANT FOOD** when you start your Gardyn. The app will help you learn when it's time to start feeding your plants later on.



**The device is turned ON/OFF** by flipping the main switch located on the back of the water tank.

**Make sure the main switch is in the OFF [O] position before plugging in or unplugging the device to the power supply.** Once the device is plugged in, turn it on by flipping the main switch to the **ON [I] position.**

**The main switch will illuminate** and your device will blink 3 times once it is fully powered up.



STEP 8

# Install your plants

Watch Video

- 1 If you haven't already,** open and unpack the box containing the 30 yPods.

- 2 Insert 1 yPod** into each of the open slots on every column. To insert, twist each yPod until it sits flush with the column.

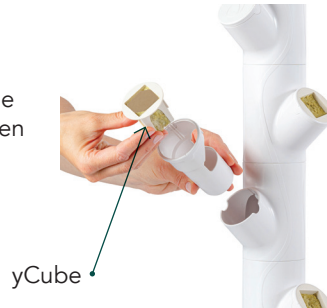


- Tip** Check out our **placement guide** to find your plants' ideal spots based on your starter kit!



Placement Guide

- 3 Time to plant!** Place the yCubes into the yPods. yCubes are correctly inserted when they sit flush with the yPod.



**No slot should be left open.** Use Gardyn Caps and skip the yPod to close spots without plants.



Shop Gardyn Caps



- 4 Remove** the cardboard covers on every yCube you plant.

- Tip** Only see one layer of yCubes in the box? Lift the packaging to find all 30!

- Tip** **30 plants or fewer to start?** The choice is yours! If you plant fewer than 30, be sure to cover open slots with Gardyn Caps, available in the app.





Download the app

STEP 9

# Connect your Gardyn to get growing

The full Gardyn experience awaits you in the app.



Activate your membership



Meet your AI Gardyning Assistant Kelby



Discover and shop for your favorite varieties



Control your device at your fingertips



Gardyn

### Download the Gardyn app

to connect your Gardyn to WiFi and pair it with your phone.



### A whole community awaits you in our app!

Connect with fellow Gardyners while participating in fun activities, getting helpful tips and tricks, sharing recipes, and so much more.





Scan to shop

# The Gardyn Essentials

Grow with confidence and ease using our unique accessories.

## Nursery

Enjoy continuous harvests by germinating new yCubes after you've started your Gardyn, plus grow Microgreens with ease.



## HydroBoost

Reduce the frequency and intensity of cleaning while boosting plant health with our plant-based water treatment solution.



Gardyn Vase



yCovers



Plant Belt



Gardyn Trellis



Gardyn Cap



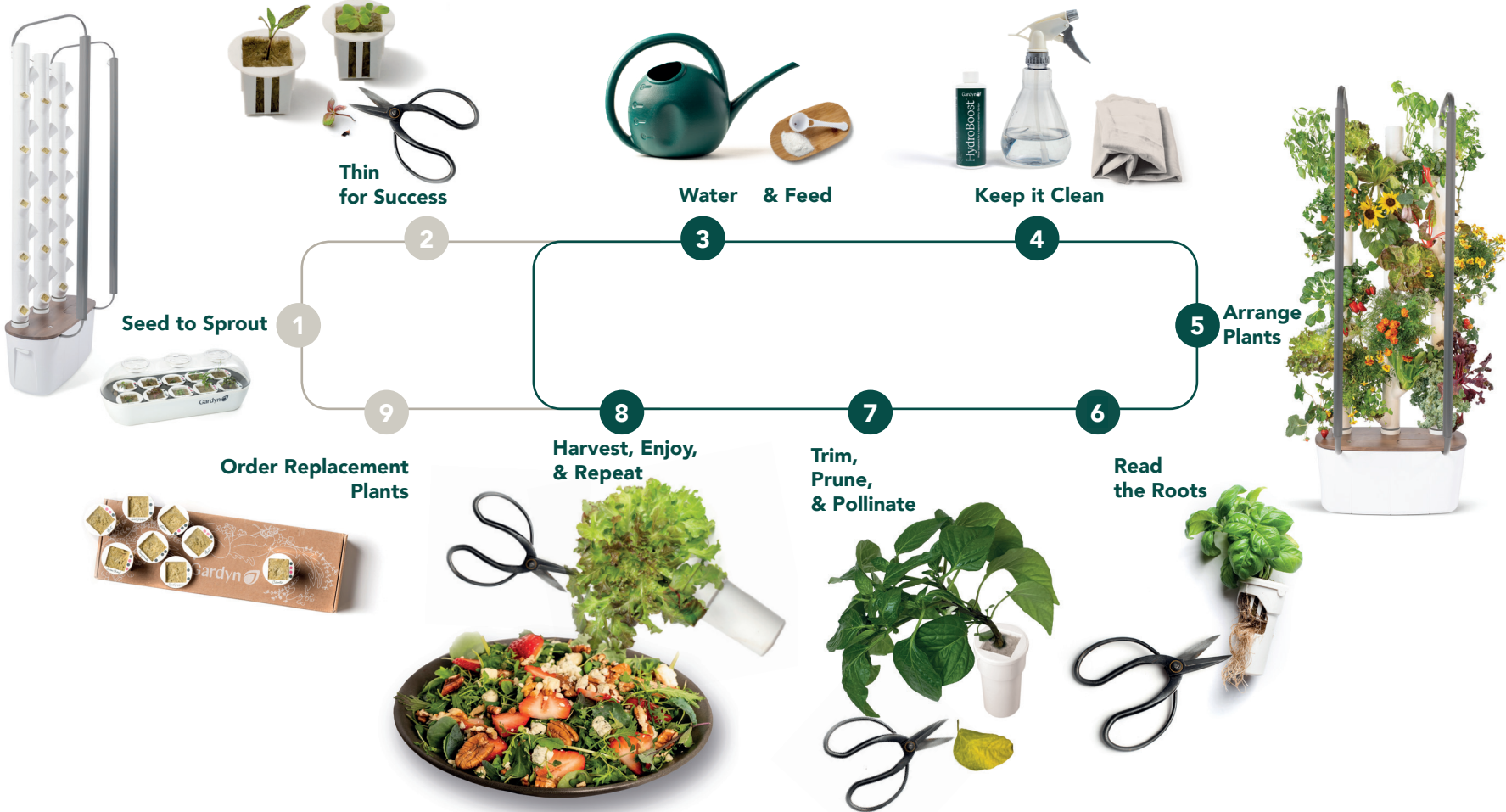
Gardyn Dolly



Learn More

# Your Gardyn's Care Cycle

Get to know the life cycle of your device from seed to harvest and beyond. You'll get the hang of this simple routine in no time. Plus, Kelby and the app will guide members on all the details!



# Safety instructions

Thank you for choosing Gardyn Home! Please read and follow these safety instructions before you set up your device and keep them handy if you run into any issues while using your device. If you have any questions about your device or its operation please contact us at [support@mygardyn.com](mailto:support@mygardyn.com).

## Read all instructions before installing and operating your device.

It is the owner's responsibility to ensure that all users are aware of all warnings and precautions. When using an electrical unit, basic precautions should always be followed, including the following:

### DANGER – To reduce the risk of electric shock:

- Always unplug the Gardyn Home from the electrical outlet before cleaning or performing maintenance operations.
- If setting up multiple devices, be sure not to overload the power supply or circuit, and if needed, utilize two different outlets.
- Never allow the electrical cord or outlet to get wet.
- Be sure to fully set up Gardyn Home first, and then fill the reservoir with water, and be careful to not splash or spill water outside of the reservoir, especially near any electrical outlets or the electrical components of the device.
- When filling the reservoir be careful not to overflow the reservoir with too much water. If the reservoir is overfilled, there are weeping holes that will cause the excess water to drain out and in addition to the potential electrical issues, the additional water could damage or destroy carpet and surrounding floors.
- When moving the device or performing any maintenance on the device, be sure to fully empty the water reservoir first to avoid any spills or splashing.

### WARNING – To reduce the risk of burns, fire, electric shock, or injury to persons:

- Unplug from outlet before assembling or disassembling parts.
- To disconnect, place the power switch located behind the unit in OFF position, then remove plug from outlet.
- Use this unit only for its intended use as described in these instructions. Use only original parts from the manufacturer. Changes or modifications to this unit not expressly approved by the party responsible for compliance could void the user's authority to operate the equipment.
- If a part is damaged or worn, contact the manufacturer immediately to order the appropriate spare part, then replace the damaged or worn parts. Do not use the unit until the repair is performed. The provision of replacement parts may be subject to the warranty on the device and if expired, may require additional costs.
- Never operate this unit if it is incomplete, has a damaged cord or plug, is not working properly, has been dropped or damaged, or has been dropped into water or had an excessive amount of water spilled onto it.
- Do not try to unscrew any part of the unit or open it using force.
- Keep the cord away from any heat source and open flame.
- Never drop or insert any object into any unit opening.
- This unit is for indoor use only. Do not store it outdoors, near water, or in high humidity levels. Failure to maintain the product indoors could result in pest infestations or other damage to the device.
- Do not operate where aerosol (spray) products are being used or where oxygen is being administered. Do not store near aerosol products or oxygen tanks.
- Do not immerse the unit, cord, or plug in water or any other liquid. As noted above, be mindful to not splash or spill water when filling the water reservoir and be careful to not overflow the water reservoir.
- Make sure there is no water close to the power supply or its cord.
- Never pour water on the lights, on the power supply, on the cord, or on the power outlet.
- This product is not intended for use by children or persons with reduced physical, sensory or mental capabilities or lack of experience or knowledge, unless they are directly supervised by a responsible and capable adult who is responsible for their safety and understands the hazards involved.
- Cleaning and user maintenance shall not be performed by children.
- Close supervision is necessary when this product is stored or used by, or near where children or individuals with special needs frequently gather and/or can obtain access to the product.
- User's home electrical wiring shall be in accordance with all applicable laws, rules and regulations.
- Users must ensure that the product is connected to an outlet having the same configuration as the device's plug. No adapters or extension cords should be used with this product, however a surge protector may be used.

### Device Cameras

- Do not touch or try to manually adjust the cameras.
- When first installing the product or when physically moving/changing its location, and if using the Cameras, Users should check the pictures that are being taken to ensure that there is no images or other information being captured by the Cameras that the User does not want to share.
- Never place the device in a child's bedroom or an area where children regularly play such as a playground.
- Any photos taken by the Camera can be deleted by the Customer Service team.
- Cameras can be disabled by adjusting the settings in the App or by leaving the sticker on. Please note that the camera only takes still pictures every 30 minutes and does not record video or sound.

### Notice & Additional safeguards

- Do not look directly into the lights when ON.
- The device should be used indoors exclusively, in a dry and temperate environment (65 ° F-80 ° F / 18 ° C – 27 ° C).
- Make sure all packaging material or promotional labels have been removed and safely discarded before using the unit for the first time.
- To operate, the device needs to be connected to WiFi. Any WiFi that the device connects to should be secured with a password.
- No water connection is necessary.
- No sunlight is necessary.
- Use the lateral lid locks to secure the lid on the water tank before powering the device.
- Do not touch the lights' enclosure: it can get warm due to the heat dissipated by the lights.
- An opening on the surface of the wooden board makes it possible to fill the tank and add nutrients. When filling the water tank, make sure that the water level stays below the bottom edge of the circular opening.
- Any water that may spill on the device should be promptly wiped off.
- The removable wooden cap, which covers the hole to pour water onto the tank, should remain in position when the device is ON to avoid the development of biofilm in the device.
- Always make sure the water pump is in the lowered position inside the water tank when the device is ON.
- When pulling yPods out of the column, use the sleeve provided by the manufacturer to avoid any water spillage. Do not pull the yPods from the column when the pump is working or within the 5 minutes following irrigation by the water pump.
- Used electric or electrical products should not be disposed of with general household waste. Please recycle where facilities exist. Check with your local authority for recycling advice. Disposing of this product correctly will help save valuable resources and prevent any potential negative effects on human health and the environment, which could otherwise arise from inappropriate waste handling.
- The plants growing on the device are of the user's sole responsibility. Do not add any spray or liquid or chemical on the plants. Do not eat any plant if it presents any risk, including food sensitivities and/or allergies. Typically, only some parts of the plants are edible. Non-edible parts should not be consumed.
- If pests, including insects, become apparent, please contact Gardyn for information on how to manage any pest issues. It is important to move as expeditiously as possible. Gardyn shall not be responsible for any resulting damages following an untreated pest infestation, including damage to user's property or health issues.
- As with any natural product, it is possible that mold or fungus may develop on the plants or other organic materials used with the device. If mold or fungus develops, please contact Gardyn for information on how to safely remove it and ways to avoid it from redeveloping.
- Use of untested or unauthorized products with the Gardyn device, including third party branded plant food, cleaning agents, chemicals such as hydrogen peroxide, etc., may result in damage to the machine or plants, or may result in toxicity in plants or produce. Such use is strictly prohibited and will be considered a use against recommendation voiding the warranty.
- Gardyn branded products are meant to be used with the Gardyn device and should not be used for any other purposes, including for use in other brands indoor planting devices, and if you do so it is at your own risk, and Gardyn is not liable. Unauthorized use of Gardyn products such as HydroBoost or Gardyn-brand plant food with any plants or devices besides the Gardyn device may result in damage to persons or property and is strictly prohibited.
- If users experience illness after ingesting or otherwise coming into contact with a plant grown from Gardyn, users should immediately contact a medical professional.
- Some Gardyn plants may be toxic to animals, including pets. Please consult with your veterinarian regarding which Gardyn plants may be dangerous to your pets and keep any such toxic plants out of reach. Gardyn disclaims any responsibility for illness of pets or other animals who have ingested plants grown from Gardyn devices.

**NOTE:** This equipment has been tested and found to comply with the limits for a Class B digital device, pursuant to Part 15 of the FCC Rules. These limits are designed to provide reasonable protection against harmful interference in a residential installation. This equipment generates, uses and can radiate radio frequency energy and, if not installed and used in accordance with the instructions, may cause harmful interference to radio communications. However, there is no guarantee that interference will not occur in a particular installation. If this equipment does cause harmful interference to radio or television reception, which can be determined by turning the equipment off and on, the user is encouraged to try to correct the interference by one or more of the following measures:

- Reorient or relocate the receiving antenna.
- Increase the separation between the equipment and receiver.
- Connect the equipment into an outlet on a circuit different from that to which the receiver is connected.
- Consult the dealer or an experienced radio/TV technician for help. This device complies with Part 15 of the FCC Rules and Industry Canada license-exempt RSS standard(s). Operation is subject to the following two conditions:
  - this device may not cause harmful interference, and
  - this device must accept any interference received, including interference that may cause undesired operation.

### FCC & IC Radiation Exposure Statement:

This equipment complies with FCC and Canada radiation exposure limits set forth for an uncontrolled environment. This equipment should be installed and operated with a minimum distance of 20cm between the radiator and your body. This transmitter must not be co-located or operating in conjunction with any other antenna or transmitter.

### SAVE THESE INSTRUCTIONS FOR FUTURE REFERENCE

#### Terms of Service:

[mygardyn.com/policy/terms-of-service](https://mygardyn.com/policy/terms-of-service)

#### Warranty:

[mygardyn.com/policy/warranty](https://mygardyn.com/policy/warranty)

#### Privacy:

[mygardyn.com/policy/privacy](https://mygardyn.com/policy/privacy)

#### Referral Terms & Conditions:

[mygardyn.com/gardyn-referral-program-terms-and-conditions/](https://mygardyn.com/gardyn-referral-program-terms-and-conditions/)

#### Subscription terms:

[mygardyn.com/policy/subscription](https://mygardyn.com/policy/subscription)

#### Return:

[mygardyn.com/policy/return](https://mygardyn.com/policy/return)

#### Patents:

[mygardyn.com/patents](https://mygardyn.com/patents)

*Due to continuous product improvement, the products illustrated/photographed in this booklet may vary slightly from the actual product.*





# Questions?

Explore the Help Center



[support@mygardyn.com](mailto:support@mygardyn.com)